






*WIRELESS SOLUTIONS FOR
ENERGY AND ENVIRONMENT*



UNWIRE

8 *SERIES DATA RADIOS*

MIRATRON 8 SERIES WIRELESS DATA RADIOS

T8-SML <i>for Pulse Meters</i>	T8-LTE <i>for Sensors</i>	T8-DLX <i>for Weather Stations</i>
		

Wireless Solutions for Energy Services Projects and Building Automation Systems

- Provides a cost effective, reliable, long-range wireless radio link between pulse meters or analog sensors and data acquisition systems or building automation controllers.
- Truly wireless solution with battery or solar powered models and built-in power management features.
- Simple installation and basic configuration with field selectable inputs.
- Easily accessible advanced configuration features via USB or RS-485 interface and free setup utility software.
- Flexible and scalable wireless sensor network. Combine multiple transmitter models with a single Modbus RTU or BACnet MS/TP receiver.

IDEAL FOR CHALLENGING APPLICATIONS!

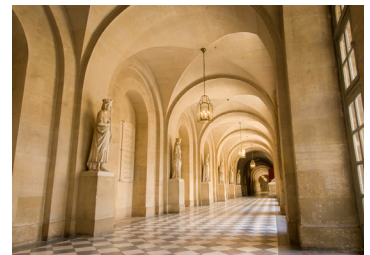
Campuses

Rooftops and remote areas where hard-wiring is not practical.



Historical Buildings

Brick, stone, and protected buildings where wiring is not permitted.



Remote Locations

Wireless monitoring where external power is not available.



Agriculture

Greenhouses, orchards, and fields. NEMA/IP rated for wet or dusty locations.

Temporary Areas

Short-term deployments for energy audits, museum exhibits, festivals, pop-ups.



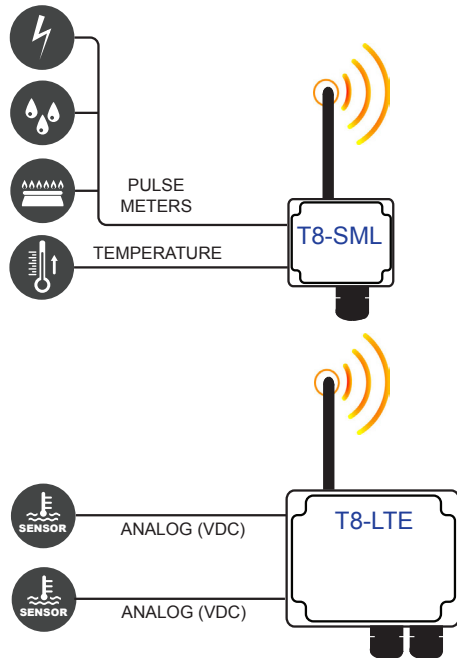
Long Distances

Eliminates wire runs over roadways, in stadiums, arenas, factories, and warehouses.



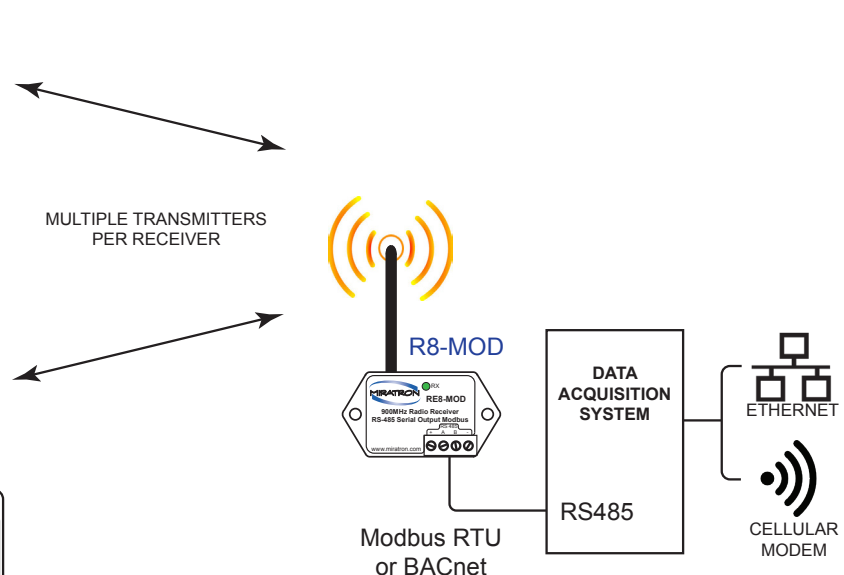
TOPOLOGY

SENSORS PULSE METERS



8 SERIES WIRELESS LINK

DATA ACQUISITION



8 SERIES TRANSMITTERS

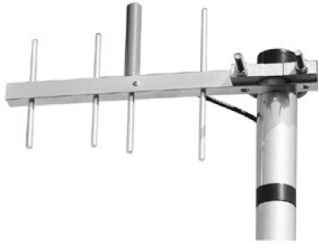
	T8-SML <i>Pulse Meter Inputs</i>	T8-LTE <i>Analog Sensor Inputs</i>	T8-DLX <i>Weather Station</i>
INPUTS			
INPUTS	PULSE + THERMISTOR OR 2ND PULSE	2 X SELECTABLE ANALOG INPUTS	4 X SELECTABLE ANALOG INPUTS
SENSOR OPTIONS			
TEMPERATURE	INTEGRAL PROBE - NO INPUTS	INTEGRAL PROBE - INPUTS AVAILABLE	2 DEDICATED THERMISTOR INPUTS
RELATIVE HUMIDITY %	INTEGRAL PROBE - NO INPUTS	INTEGRAL PROBE - INPUTS AVAILABLE	✓
WIND SPEED/DIRECTION	-	-	✓
PYRANOMETER INPUT	-	-	✓
SOIL TENSION INPUT	-	-	✓
GPS	-	-	✓
POWER OPTIONS			
BATTERY	✓	✓	✓
SOLAR	✓	✓	✓
EXTERNAL	✓	✓	-
ENCLOSURE			
NEMA/IP RATED	POLYCARBONATE W/MOUNTING TABS		POWDER COATED STEEL

Visit our website for product literature and additional information. www.energydataradio.com

R8 RECEIVER



Includes "rubber duck" antenna (not shown)



Optional Yagi Antenna for extended range.



Optional Omni Antenna

FEATURES

■ Compact Size

Easily integrated in tight control panels. Fits in 3" x 3" area.

■ Long-Range communication

Long-range 2.4GHz radio link for reliable outdoor line-of-sight operation to 1,000 feet. High power 900MHz model available for reliable line-of-sight communication up to 3 miles with directional antenna.

■ Easy Integration

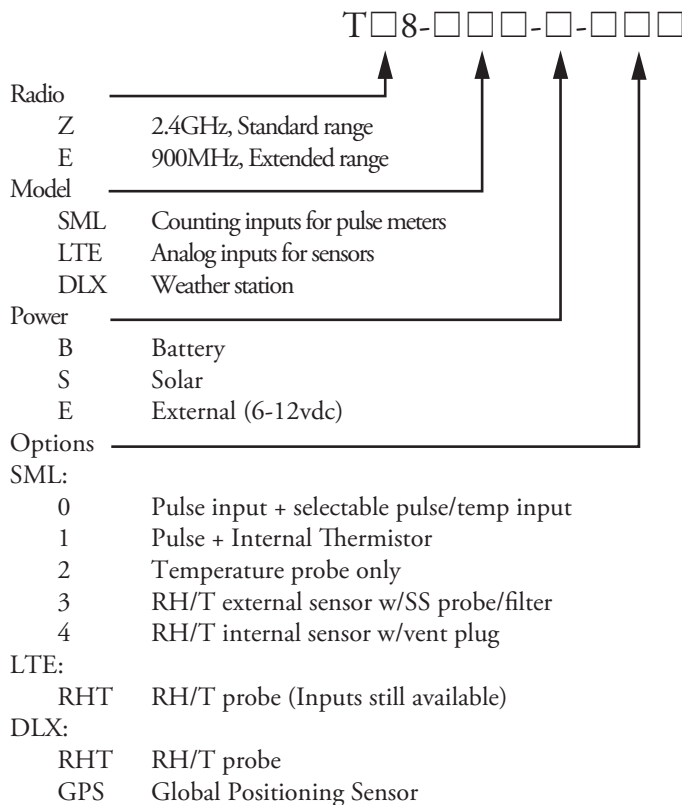
Popular output types for compatibility with BAS systems, PLC's and DAQ's, and industrial automation systems.

■ Flexible antenna options

RZ8 standard range and RE8 extended range models include RP-SMA connected rubber duck. Optional external wire whip for extended range. Yagi available for improved performance.

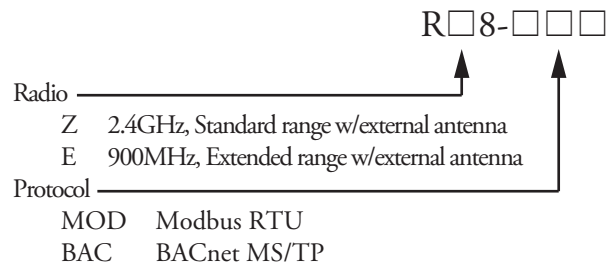
ORDERING INFORMATION

T8 TRANSMITTERS



Consult website for additional options and accessories.

R8 RECEIVERS



ACCESSORIES

PART #	DESCRIPTION
T8-VAC	Sensor kit for soil tensiometer
T8-IMM	Temperature sensing immersion probe w/armored cable
T8-ANE	Pulse to analog converter for cup anemometer
T8-PMK-DLX	Pole mounting kit for DLX model.
ANT-YAG-900	Directional long-range Yagi antenna kit w/mounting.
ANT-OMN-900	Omni-directional long-range whip antenna kit w/mounting.



Miratron, Inc.
16420 SW 72nd Avenue,
Portland, Oregon 97224
1-866-417-5008

www.energydataradio.com